



Undersea Rescue Command (URC)



CAPT John Witte, USN
Commanding Officer, Undersea Rescue Command



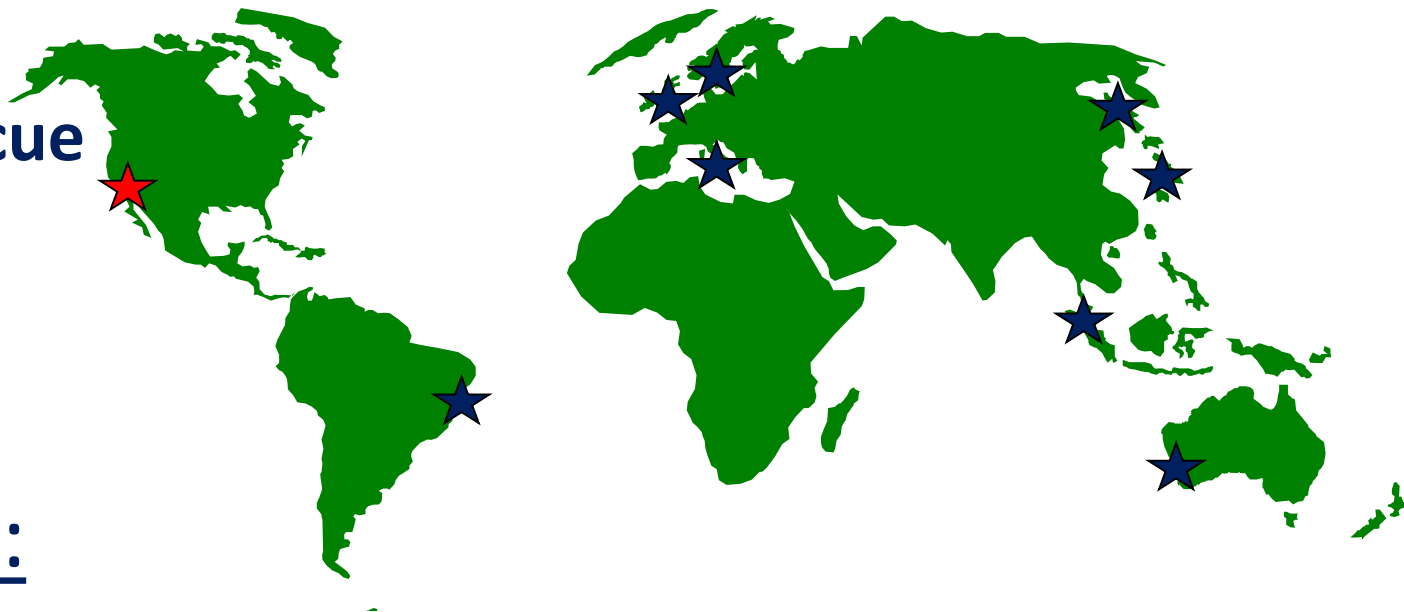
World Wide Submarine Rescue

Undersea Rescue Command

- Sole US Provider

Mission:

Work with partners worldwide to provide disabled Submarine Intervention and Rescue





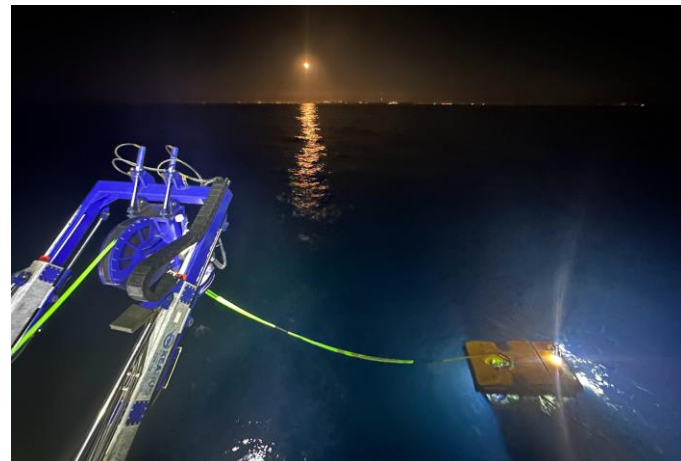
URC Sub Rescue Enterprise



Contractor maintains, transports, and installs all equipment



Navy operates key equipment and conducts undersea operations



UNCLASSIFIED



URC Structure



- **Active duty:** 7 Officers, 45 Enlisted
- **Reserves:** 11 Officers, 46 Enlisted
- **Contractors:** 50 Personnel

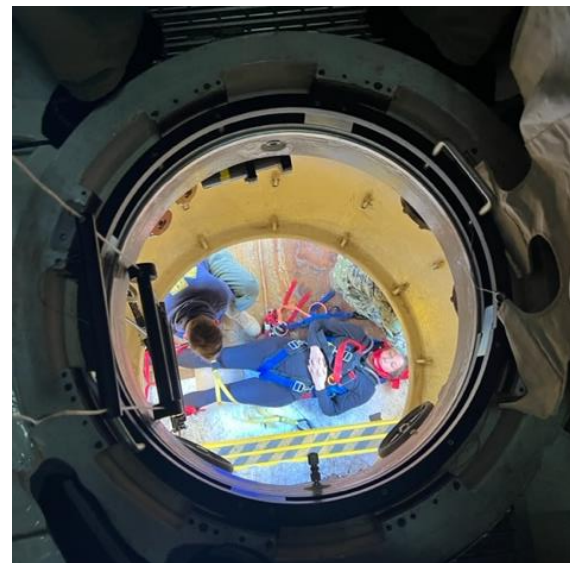


UNCLASSIFIED





URC Sailors



- **Navy Divers:** Purpose is to operate in pressurized environment (rescue equipment or sub)
- **Undersea Medical Officer and Corpsmen:** To treat injured rescues and manage decompression
- **Ops/QA/Admin Support:** Navigation, communication, maintenance oversight

UNCLASSIFIED



Training Support Ship



- HOS DOMINATOR
- Operated by civilian mariners, similar to vessel URC would contract locally for a rescue

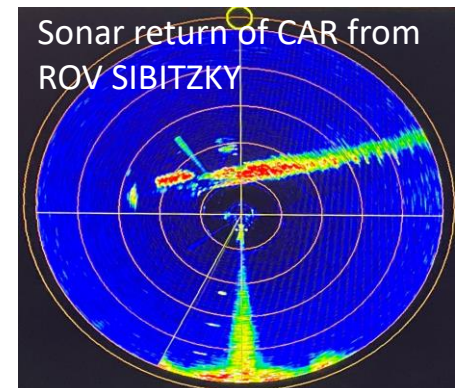


Remotely Operated Vehicle (ROV)



Mission = Intervention

- Tethered to Surface Ship
- Video, Sonar Capability
- Articulated Joints
- 2,000 ft Maximum Depth
- Conducts DISSUB Survey, and clears fouled hatches



UNCLASSIFIED



Side Looking Sonar (SILOS)



- Towed behind host ship or small boat
- Used for localization of submarine
- Not intended for wide area search



Pressurized Rescue Module (PRM)



UNCLASSIFIED



SRS-TUP

Submarine Rescue System – Transfer Under Pressure

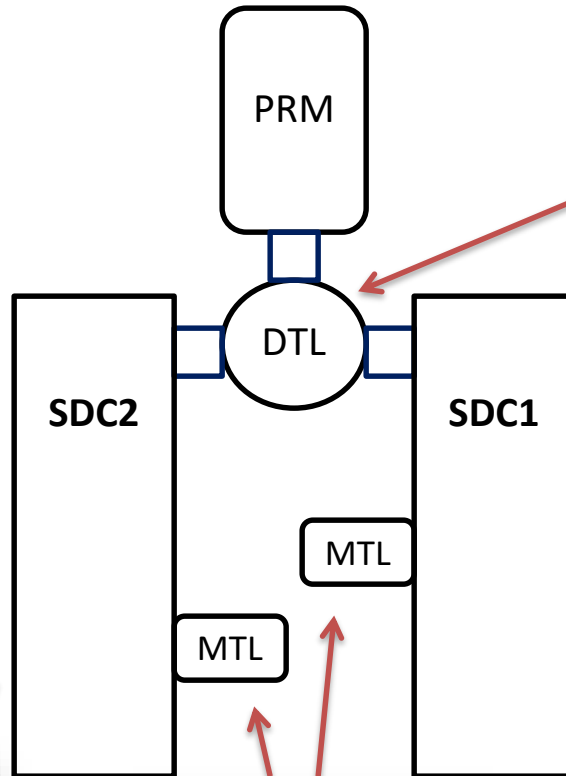


UNCLASSIFIED

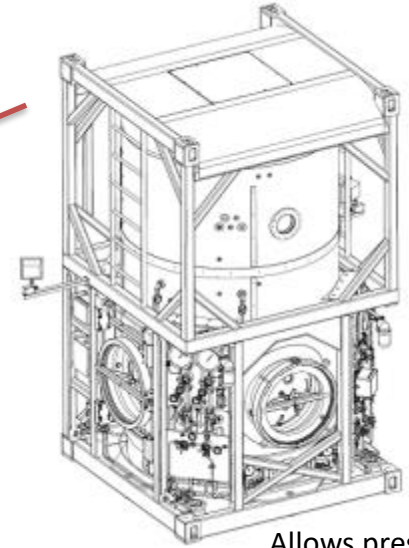


Submarine Decompression System (SDS)

Each Submarine Decompression Chamber (SDC)(x2) can hold up to 32 rescues (64 total) undergoing recompression treatment



Deck Transfer Lock



Allows pressurized transfer of rescues from PRM to SDC

Submarine Decompression Chamber



Submarine Decompression Chamber



Modified Transfer Lock

UNCLASSIFIED



Rescue Mission Sequence

START:
SUBMISS or SUBSUNK
message received at Undersea
Rescue Command



Rescue systems and
equipment are flown by
heavy airlift (C-5 or C-17) to a
nearby airfield



System is offloaded for
transport to a Vessel of
Opportunity (VOO)



END:
Module rescues up to 16 personnel
at a time from the submarine



VOO transports rescue system
and holds position over the
submarine



Rescue system and support
equipment are installed
onboard the VOO





UNCLASSIFIED

Questions



USS TEXAS, HOS DOMINATOR, and the SRDRS during Exercise GRAY LADY 2018